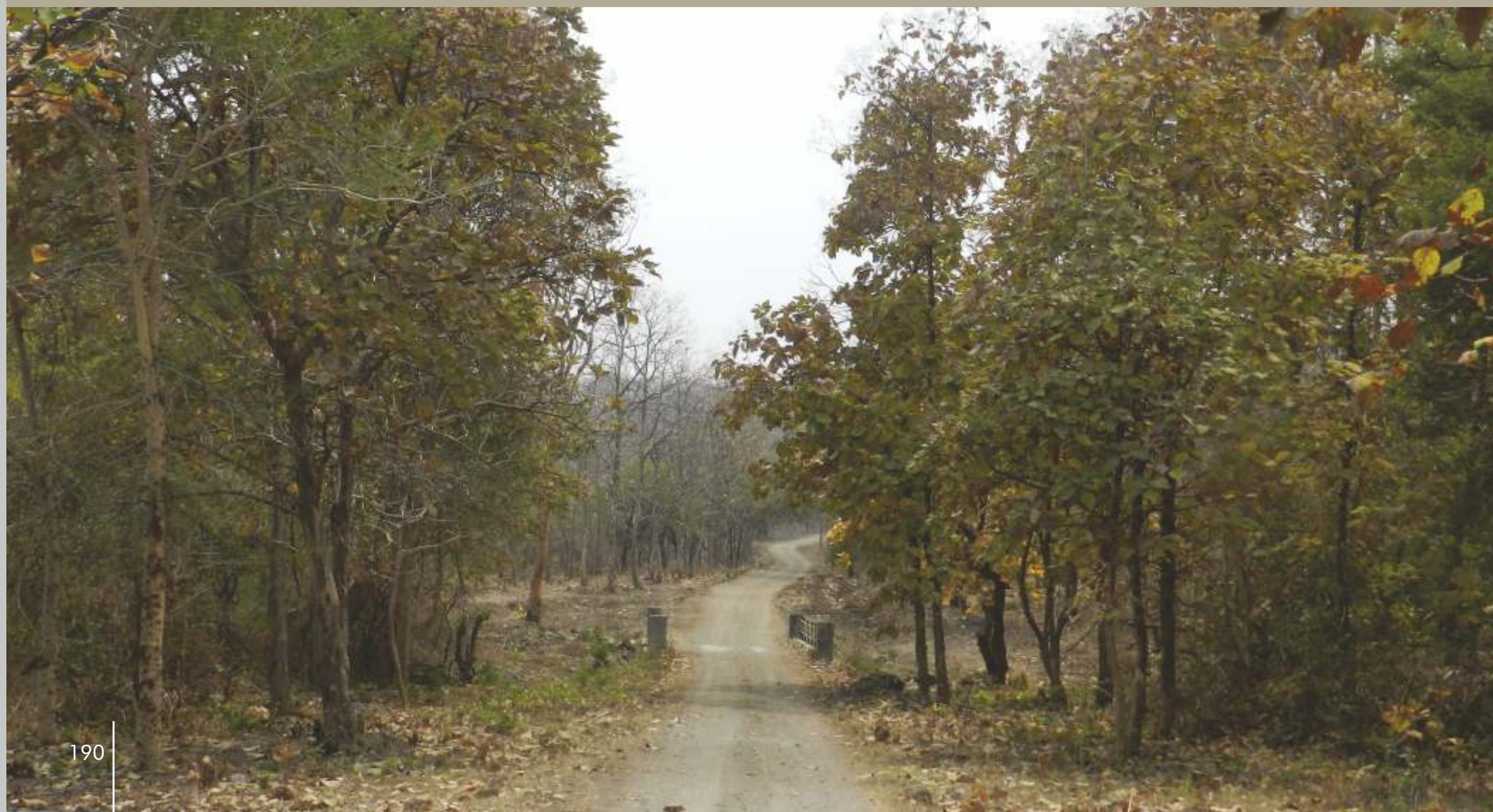


# TIPESHWAR WILDLIFE SANCTUARY



**T**ipeshwar Wildlife Sanctuary comprising of 148.63 sq.km. which came into existence on 30/04/1997. It is situated in far southern corner of Maharashtra state. The Sanctuary is in the Pandharkawda taluka. The Pandharkawda bus station on NH-7 is about 22 km while Adilabad railway station in Telangana and Yavatmal railway station in Maharashtra are closest to the Sanctuary. As per tiger census of 2014 there are 2 adults in this area.

