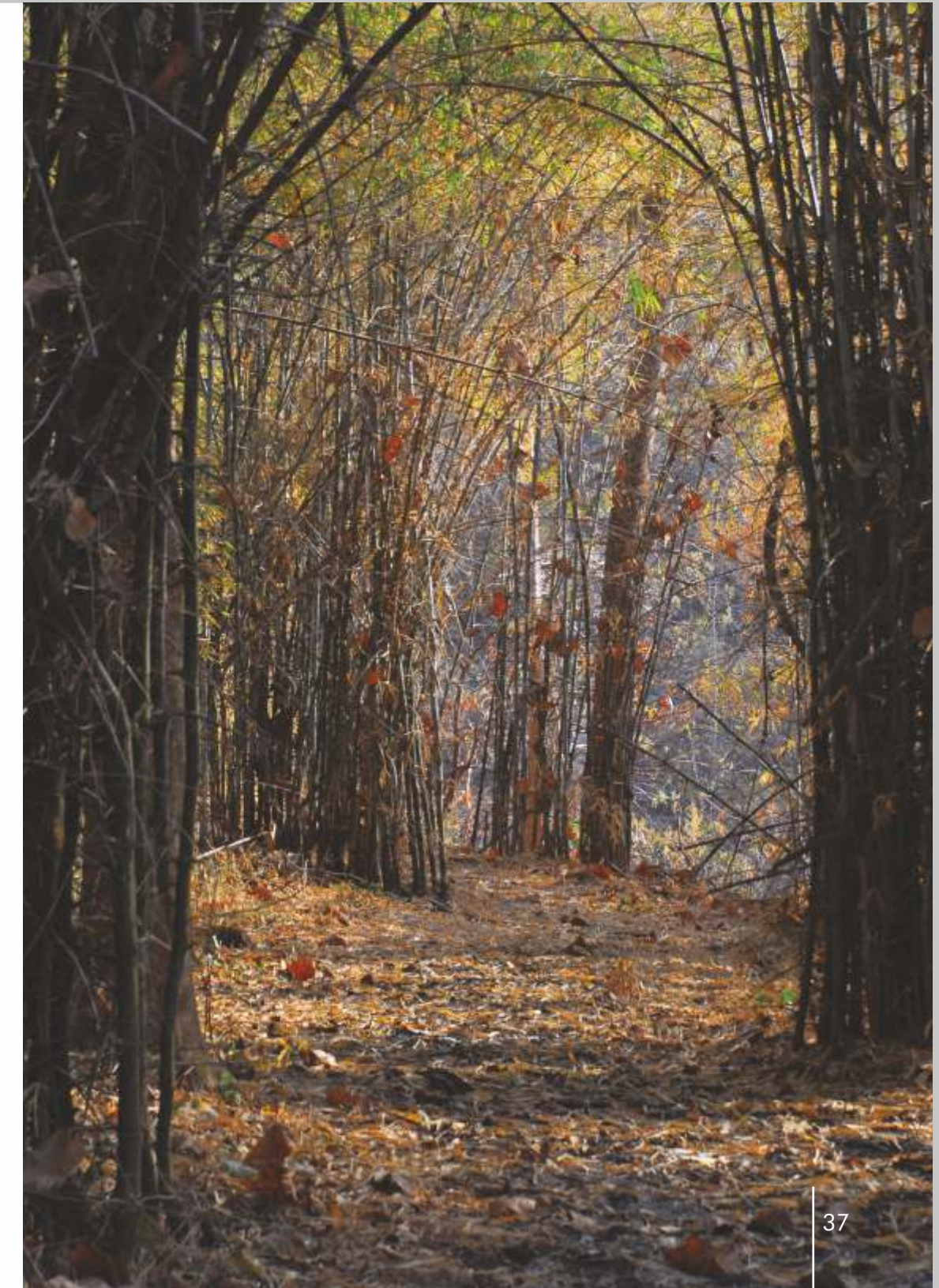


NAVEGAON-NAGZIRA TIGER RESERVE

Navegaon National Park, Navegaon Wildlife Sanctuary, Nagzira Wildlife Sanctuary,
New Nagzira Wildlife Sanctuary, Koka Wildlife Sanctuary



Navegaon-Nagzira Tiger Reserve is situated in Gondia and Bhandara Districts of Maharashtra. The reserve is rich in bio-diversity and has linkages with Kanha, Pench and Tadoba Tiger Reserves. The topography is undulating and the highest point viz. Zenda Pahad is around 702m above MSL. The Navegaon Nagzira Tiger Reserve is a miraculously preserved "Green Oasis" in the eastern most part of the Maharashtra State and has a great importance from bio-diversity conservation point of view. This Tiger Reserve is locked in the arms of nature and adorned with picturesque landscapes, luxuriant vegetation and serves as living outdoor museum to explore and appreciate nature. This Tiger Reserve is indeed nature's priceless asset and beckons one and all to enjoy its picturesque landscapes, its scenic beauty, its pure and fresh air. It is really a boon to us and hence we must realise the real worth of this marvellous treasure house of nature and must protect it as a part of our national heritage.





New Nagzira Wildlife Sanctuary

Koka Wildlife Sanctuary

The Government with due recognition to the areas richness in biodiversity, has recently notified 100.138 sq.km. are in Bhandara District located 20km. from Bhandara an Koka Wildlife Sanctuary.



Common Leopard
Panthera pardus



Common Leopard
Panthera pardus

Flora

The forests are "Southern Tropical Dry Deciduous" (Champion and Seth 1968). There are 364 species of plants and the major trees are: *Terminalia tomentosa*, *Lagerstroemia parviflora*, *Anogeissus latifolia*, *Pterocarpus marsupium*, *Diospyros melanoxylon*, *Ougeinia oogenesis*, *Tectona grandis*, *Bombax Ceiba*, *Lannea grandis*, *Boswellia serrata*, *Adina cordifolia*, *Xylia xylocarpa*, *Terminalia arjuna*, *Syzygium cuminii*, *Schleichera oleosa*, *Terminalia chebula* and *Sterculia urens*. The prominent shrubs are: *Holarrhena antidysenterica*, *Wrightia tinctoria*, *Woodfordia fruticosa* and *Helicteres isora*. While the grass species are: *Themeda*, *Iseilema*, *Apluda*, *Eragrostis*, *Cynodon*, *Imperata*, *Vetiveria* and *Heteropogon*.

Avifauna

The avifauna of this sanctuary is its most attractive wildlife feature. Well over 166 species belonging to about 16 different orders and 47 families have been recorded here. Also as many as 15 species of migratory birds and about 42 species of local migrants are reported. One remarkable bird, 'Bar-headed Goose' which is a winter migrant from Ladakh and Tibet inhabits Chorkhamara tank located adjoining the Tiger Reserve. There are 13 bird species of endangered status including Peafowl and the birds belonging to 'Accipitridae' family.

Other Key Fauna

The animals commonly spotted are Tiger, Leopard, Wild Dog, Gaur, Sloth Bear, Sambar, Four-Headed Antelope, Civet Cat, Barking Deer, Blue Bull, Spotted Deer, Jackal, Jungle Cat, Indian Wild Pig, Madras Treeshrew etc.

This Tiger Reserve is the abode of about 36 species of reptiles belonging to 2 natural orders and 11 families out of which about 6 species are of endangered status namely Indian Rock Python, Dhaman, Indian Cobra, Russel's Viper, Checkered Keelback and Common Monitor Lizard. NNTR is a home of many interesting varieties of frogs and toads like *Euphlyctis cyanophlyctis*, *Hoplobatrachus tigerinus* etc.

This Tiger Reserve is the abode of, besides innumerable other insects and ants species, about 49 Butterfly species belonging to 9 families, the important species among them are Common Rose, Common Mormon, Lime Butterfly, Common Sailor, Common Indian Crow, Black Rajah etc.



Roux's Forest Lizard *Calotes rouxii*



Jungle Owlet *Glaucidium radiatum*



Indian Roller
Coracias benghalensis



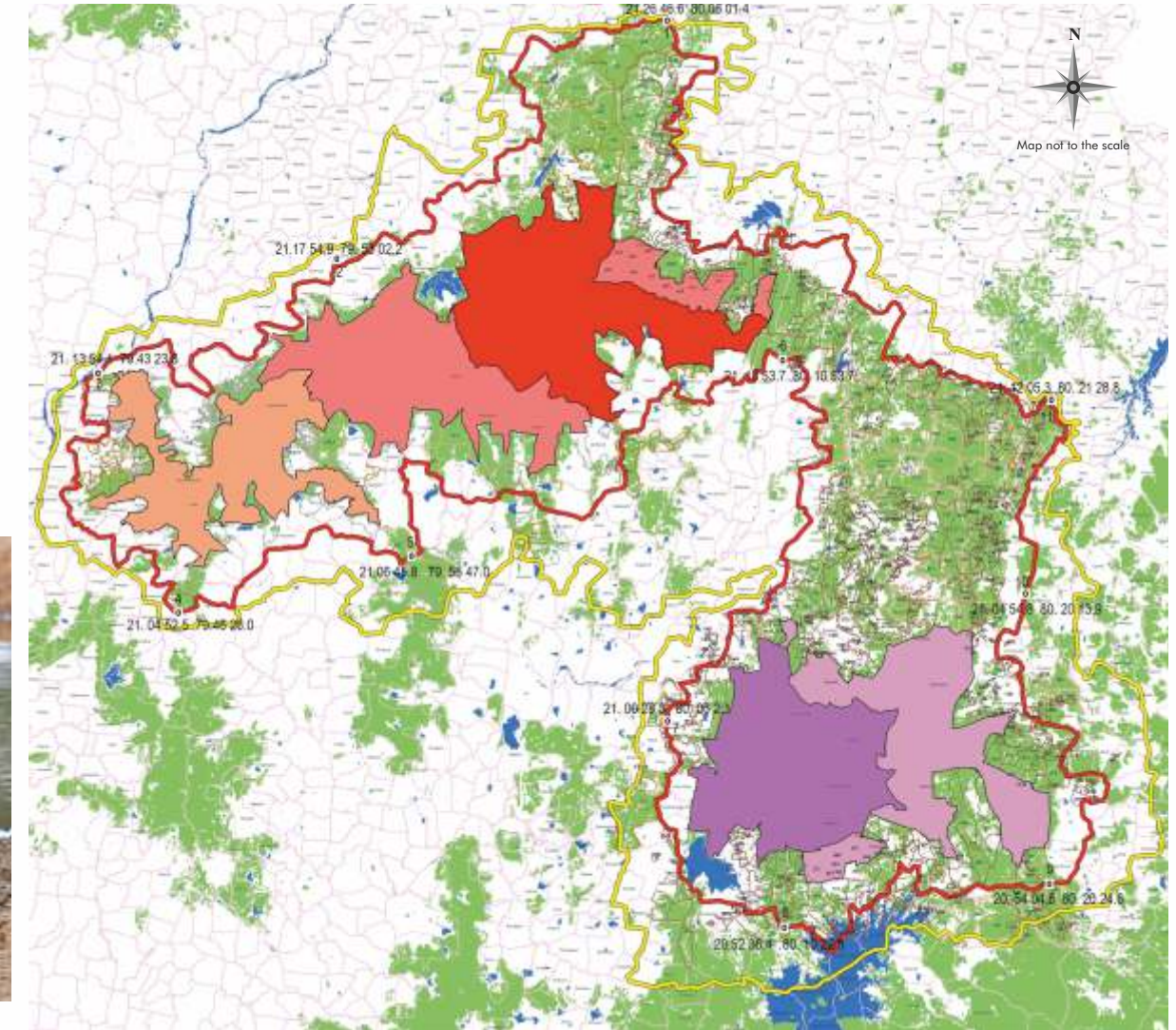
Tourist places :
 Navegaon National park
 Navegaon Bandh lake
 Itheadoh Dam
 Buddhist Temple
 Carpet Weaving Centers
 Patapgharh Fort (Gond Fort)
 Mahadeo Temple



NAVEGAON-NAGZIRA TIGER RESERVE

Legend

NNTR-Buffer	Koka WLS
NNTR-ESZ	Navegaon NP
Nagzira WLS	Navegaon WLS
New Nagzira WLS	Village Boundary



Sloth Bear *Melursus ursinus*

How to Reach :
By Air :
 Nagpur (120 Kms.)

By Rail :
Nearest railway stations are
 a) Bhandara Road 50 km
 b) Gondia 50 km
 c) Soundad 20 km
 d) Tirora 20 km

By Road :
 Navegaon Nagzira Tiger Reserve is situated only 22 km. away from Sakoli on the National Highway No. 6 (Bombay – Calcutta) which passes through Sakoli. The sanctuary is situated at the distance of about 60 km from District H. Q. Gondia and 120 km. away from Nagpur. Nearest bus-stand is at Sakoli & Tirora